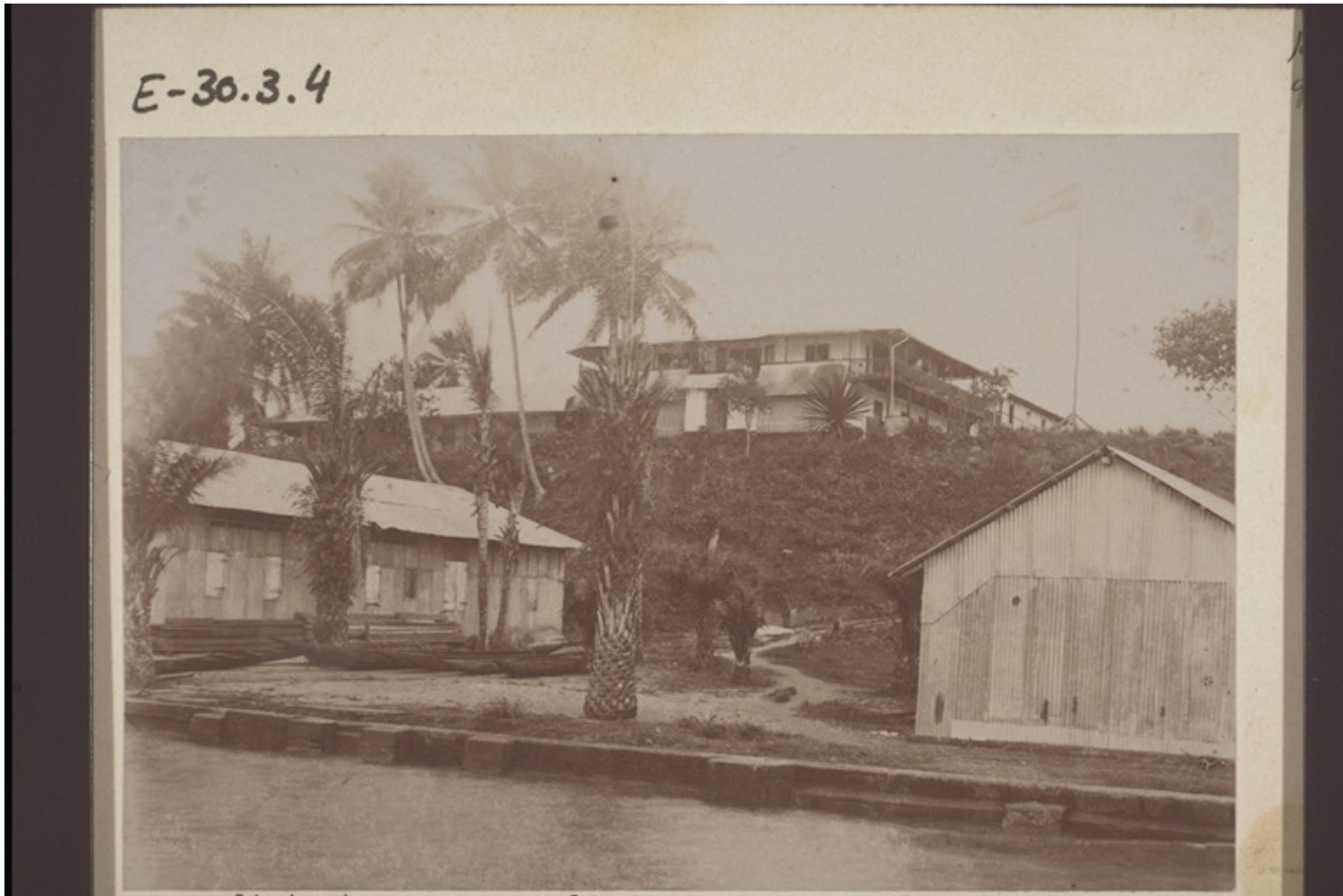


Basel Mission Archives

"Stationsgebäude in Bonaku. Schreinerei, Oelpalmen, Schuppen. "



- Title:** "Stationsgebäude in Bonaku. Schreinerei, Oelpalmen, Schuppen. "
- Alternate title:** Mission Station buildings in Bonaku. Carpenter's shop, oil palms, sheds.
- Ref. number:** E-30.03.004
- Creator:** Stutz, Jakob (Mr)
- Date:** Date late: 31.12.1906
Proper date: 01.01.1902-31.12.1906
Acquisition year: 1906
- Subject:** [Individuals]: Stutz, Jakob (Mr)
[Photographers / Photo Studios]: Stutz, Jakob (Mr)
[Geography]: Africa {continent}: Cameroon {modern state}: Littoral {province}: Douala {place}: Bonaku {place}
[Themes]: formal description: architectural view
[Themes]: economy and daily life: craft production: craftsman: carpenter
[Themes]: architecture and settlement: type and material of construction: corrugated iron

Basel Mission Archives

[Themes]: religion and philosophy (general): Christianity: mission station
[Themes]: religion and philosophy (general): Christianity: mission workshop
[Themes]: environment: botany: oil palm
[Archives catalogue]: Images: E: E-30: Cameroon, Duala, Bonaku, main mission station. 3.a. Mission station without the church, b. Bonaku mission station with the church, c. Bonaku Churchyard, d. Bonaku missionaries and children.

Type: Still Image

Format: [Format]: 7.5cm x 11cm
[Condition]: medium
[Type of support]: cardboard
[Process]: b/w positive, paper print, gelatin-silver

Relation: Group: E-30.03.004 Same images: QE-32.038.0034

Ordering: Please contact us by email info@bmarchives.org

Contact details: Basel Mission Archives/ mission 21, Missionstrasse 21, 4003 Basel, tel. (+41 61 260 2232), fax: (+41 61 260 2268), info@bmarchives.org

Rights: All the images (photographic and non- photographic) made available in this collection are the property of the Basel Mission / mission 21. The Basel Mission claims copyright on the images in their possession and requires those - both individuals and organisations - publishing any of the images, to pay a users fee.