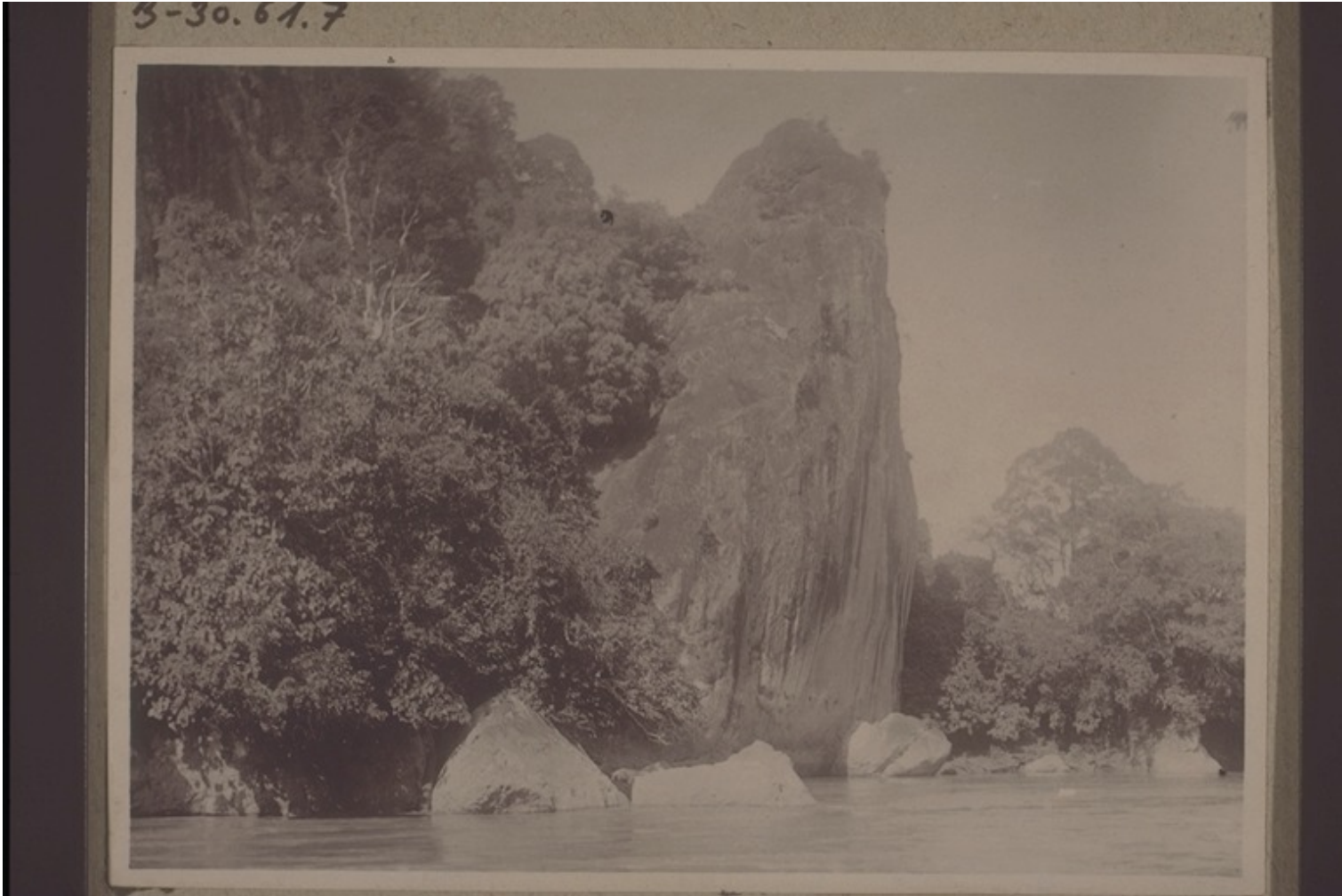


# Basel Mission Archives

---

"Upon Batoe, Felsentor m. Stromschnelle am oberen Kahajan, 3 Stunden oberhalb Tewah.  
"



- Title:** "Upon Batoe, Felsentor m. Stromschnelle am oberen Kahajan, 3 Stunden oberhalb Tewah. "
- Alternate title:** Upon Batoe, the rocky gate to the rapids on the upper Kahajan, 3 hours above Tewah.
- Ref. number:** B-30.61.007
- Subject:** [Geography]: Asia {continent}: Indonesia {modern state}: Kalimantan {region}: Tewah {place}  
[Geography]: Asia {continent}: Indonesia {modern state}: Kalimantan {region}: Kahajan (river) {other geogr names}  
[Archives catalogue]: Images: B: B-30: South East Borneo. Secular themes. 1 a Landscapes, (Landscapes, photos of geographical interest, plants and animals). B. Buildings, places.
- Type:** Still Image
- Format:** [Format]: 8.2cm x 11.3cm

# Basel Mission Archives

---

[Condition]: good  
[Type of support]: cardboard  
[Process]: b/w positive, paper print, gelatin-silver

**Relation:** Group: B-30.61.004 Same images: B-30.61.004

**Ordering:** Please contact us by email [info@bmarchives.org](mailto:info@bmarchives.org)

**Contact details:** Basel Mission Archives/ mission 21, Missionstrasse 21, 4003 Basel, tel. (+41 61 260 2232), fax: (+41 61 260 2268), [info@bmarchives.org](mailto:info@bmarchives.org)

**Rights:** All the images (photographic and non- photographic) made available in this collection are the property of the Basel Mission / mission 21. The Basel Mission claims copyright on the images in their possession and requires those - both individuals and organisations - publishing any of the images, to pay a users fee.