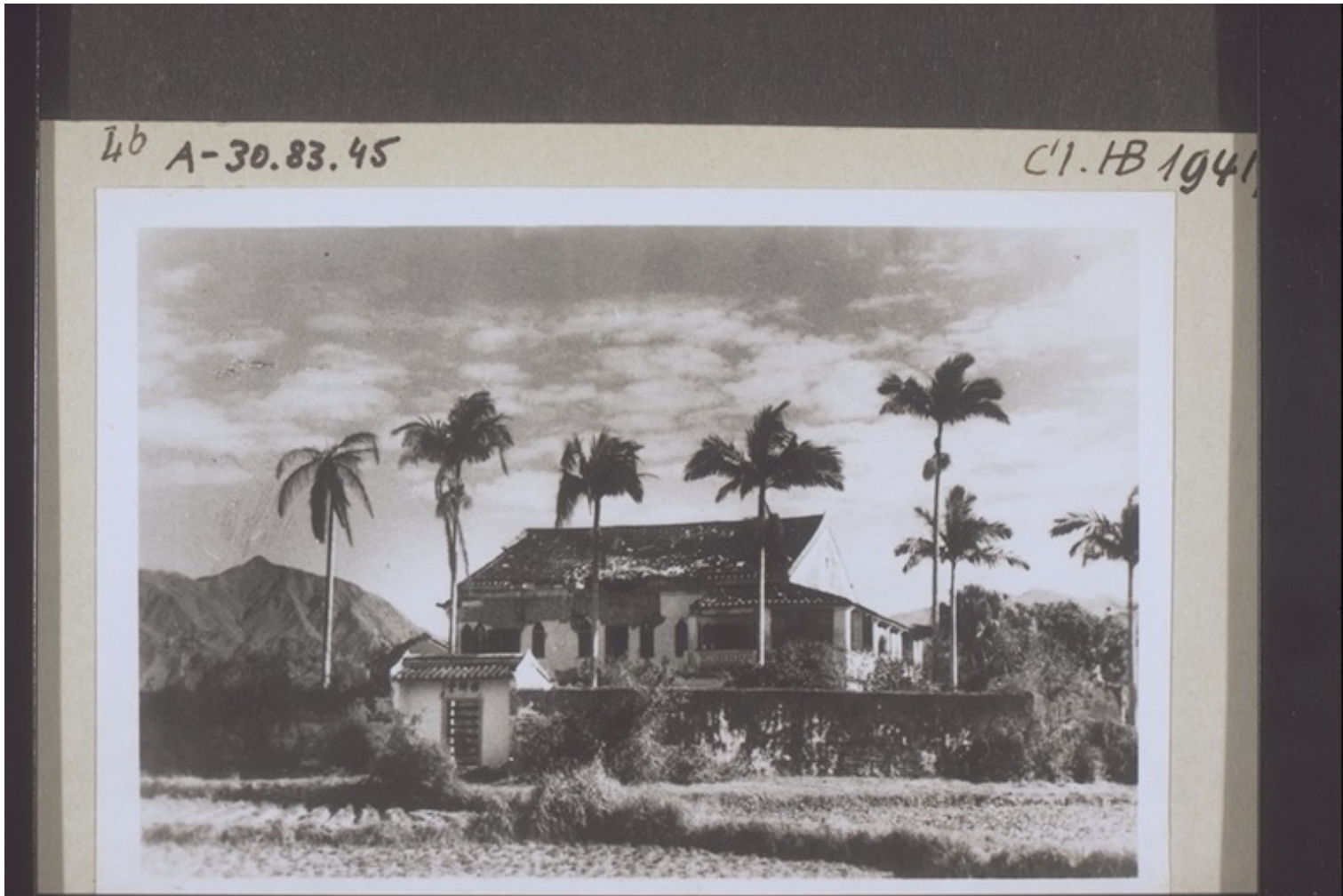


# Basel Mission Archives

"Station Kitschung nach japan. Fliegerangriff 1940, Hauptgebäude. "



- Title:** "Station Kitschung nach japan. Fliegerangriff 1940, Hauptgebäude. "
- Alternate title:** Mission station Kitschung, the main building after the Japanese air raid 1940.
- Ref. number:** A-30.83.045
- Date:** Proper date: 1940  
Acquisition year: 1940
- Subject:** [Geography]: Japanese {people}  
[Geography]: Asia {continent}: China {modern state}: Guangdong {province}: Huizhou {district}: Kuiyong {place}  
[Themes]: formal description: architectural view  
[Themes]: religion and philosophy (general): Christianity: mission station  
[Themes]: environment: botany: palm  
[Themes]: conflicts - destruction and disaster: war damage  
[Archives catalogue]: Images: A: A-30: China. III. Mission a) stations, ordered alphabetically, Hong Kong, Kayin, Kitschung, Longheu, Laolung, Tschonglok, b) missionaries.

# Basel Mission Archives

---

- Type:** Still Image
- Format:** [Format]: 5.6cm x 8.5cm  
[Condition]: good  
[Type of support]: cardboard  
[Process]: b/w positive, paper print, gelatin-silver
- Ordering:** Please contact us by email [info@bmarchives.org](mailto:info@bmarchives.org)
- Contact details:** Basel Mission Archives/ mission 21, Missionstrasse 21, 4003 Basel, tel. (+41 61 260 2232), fax: (+41 61 260 2268), [info@bmarchives.org](mailto:info@bmarchives.org)
- Rights:** All the images (photographic and non- photographic) made available in this collection are the property of the Basel Mission / mission 21. The Basel Mission claims copyright on the images in their possession and requires those - both individuals and organisations - publishing any of the images, to pay a users fee.