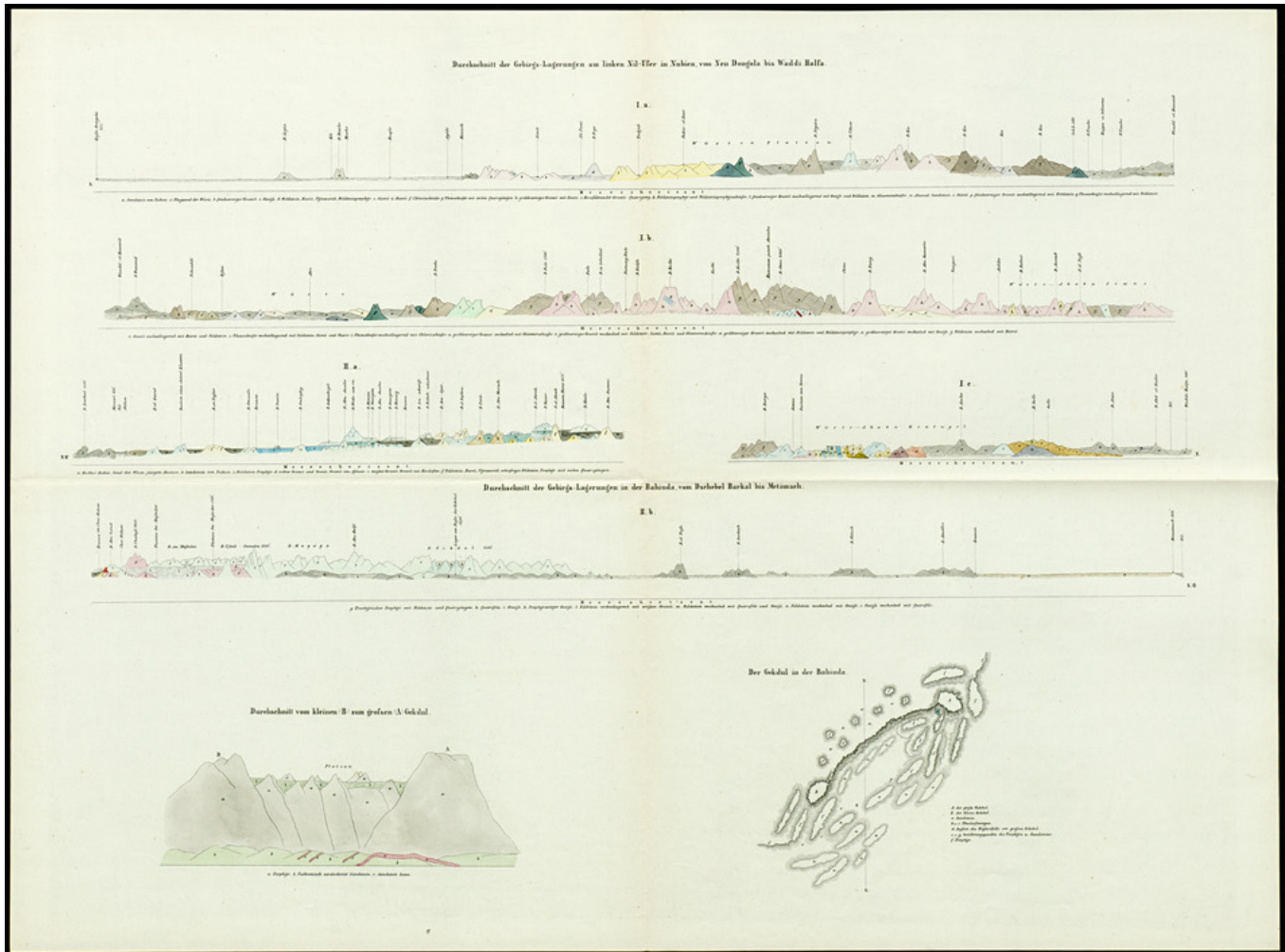


Basel Mission Archives

"Durschnitt der Gebirgslagerungen am linken Nil-Ufer in Nubien von Neu-Dongola bis Waddi Halfa "



Title: "Durschnitt der Gebirgslagerungen am linken Nil-Ufer in Nubien von Neu-Dongola bis Waddi Halfa "

Alternate title: Cross section of the mountain sediments on the left bank of the Nile from New Dongola to Wadi Halfa

Ref. number: ATL-31.005.011

Date: Proper date: [ohne Angabe]

Subject: [Geography]: Africa {continent}
[Geography]: Sudan
[Archives catalogue]: Maps and plans: ATL - Atlas collection: ATL-31:
Considering Russeggers Travels in Europa, Asien and Afrika

Type: Map

Format: [Format]: 54cm x 74cm
[Condition]: /

Basel Mission Archives

[Material]: Papier
[Scale unit]: ohne Angabe

Relation: 100205659

Ordering: Please contact us by email info@bmarchives.org

Contact details: Basel Mission Archives/ mission 21, Missionstrasse 21, 4003 Basel, tel. (+41 61 260 2232), fax: (+41 61 260 2268), info@bmarchives.org

Rights: All the images (photographic and non- photographic) made available in this collection are the property of the Basel Mission / mission 21. The Basel Mission claims copyright on the images in their possession and requires those - both individuals and organisations - publishing any of the images, to pay a users fee.