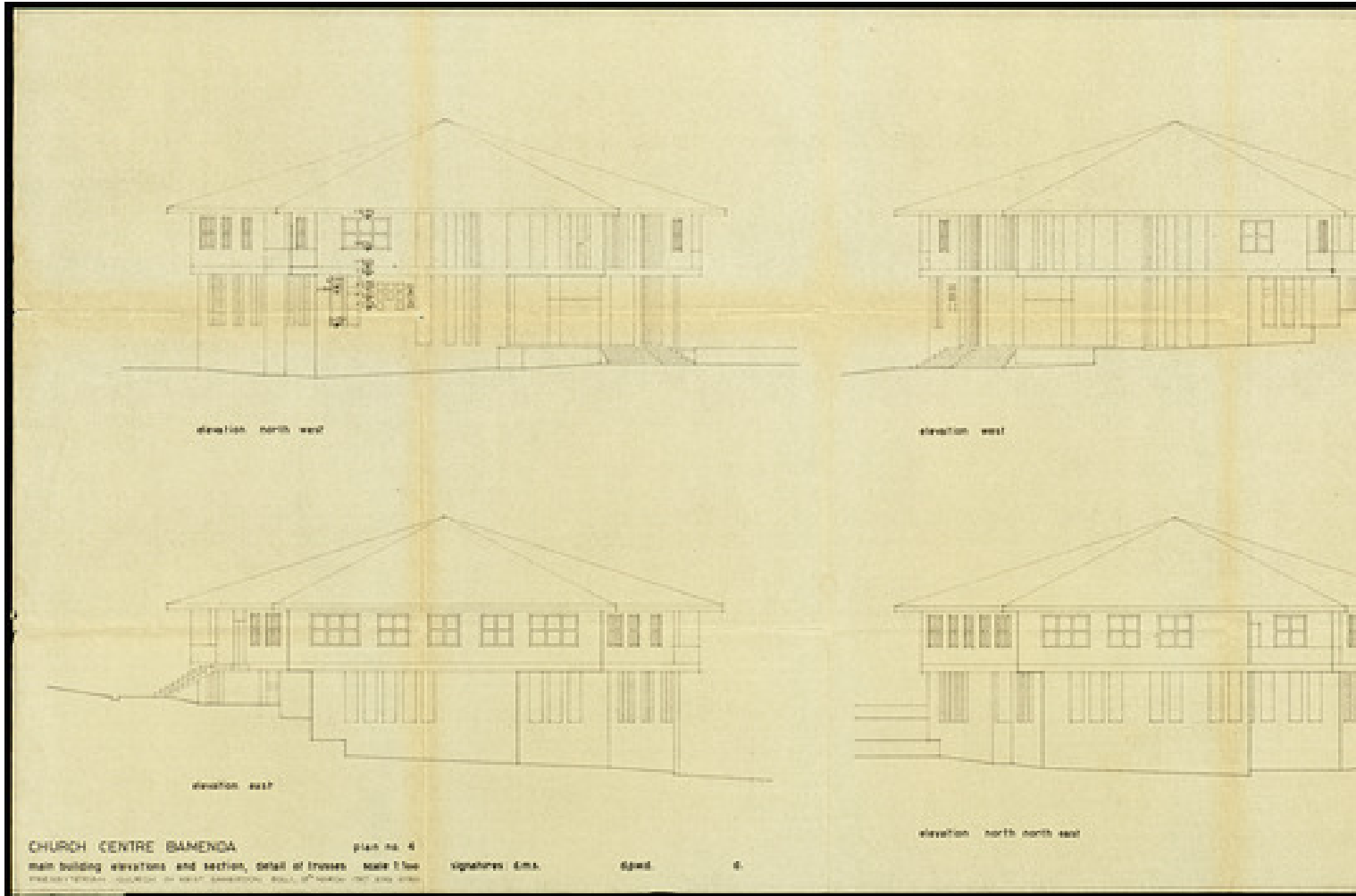


Basel Mission Archives

"Church Centre Bamenda, Main Building Elevations and section, detail of trusses, plan no. 4"



Title: "Church Centre Bamenda, Main Building Elevations and section, detail of trusses, plan no. 4"

Ref. number: WZUM-31.185

Date: Proper date: 1967

Subject: [Geography]: Africa {continent}: Cameroon {modern state}: North West Province {province}: Mezam {division}: Bamenda {place}
[Geography]: Africa {continent}: West Africa: Cameroon
[Archives catalogue]: Maps and plans: WZUM: WZUM-31

Type: Map

Format: [Format]: 45cm x 121cm
[Condition]: -
[Material]: Papier
[Scale unit]: ohne Angabe

Basel Mission Archives

Relation: 100205311

Ordering: Please contact us by email info@bmarchives.org

Contact details: Basel Mission Archives/ mission 21, Missionstrasse 21, 4003 Basel, tel. (+41 61 260 2232), fax: (+41 61 260 2268), info@bmarchives.org

Rights: All the images (photographic and non- photographic) made available in this collection are the property of the Basel Mission / mission 21. The Basel Mission claims copyright on the images in their possession and requires those - both individuals and organisations - publishing any of the images, to pay a users fee.