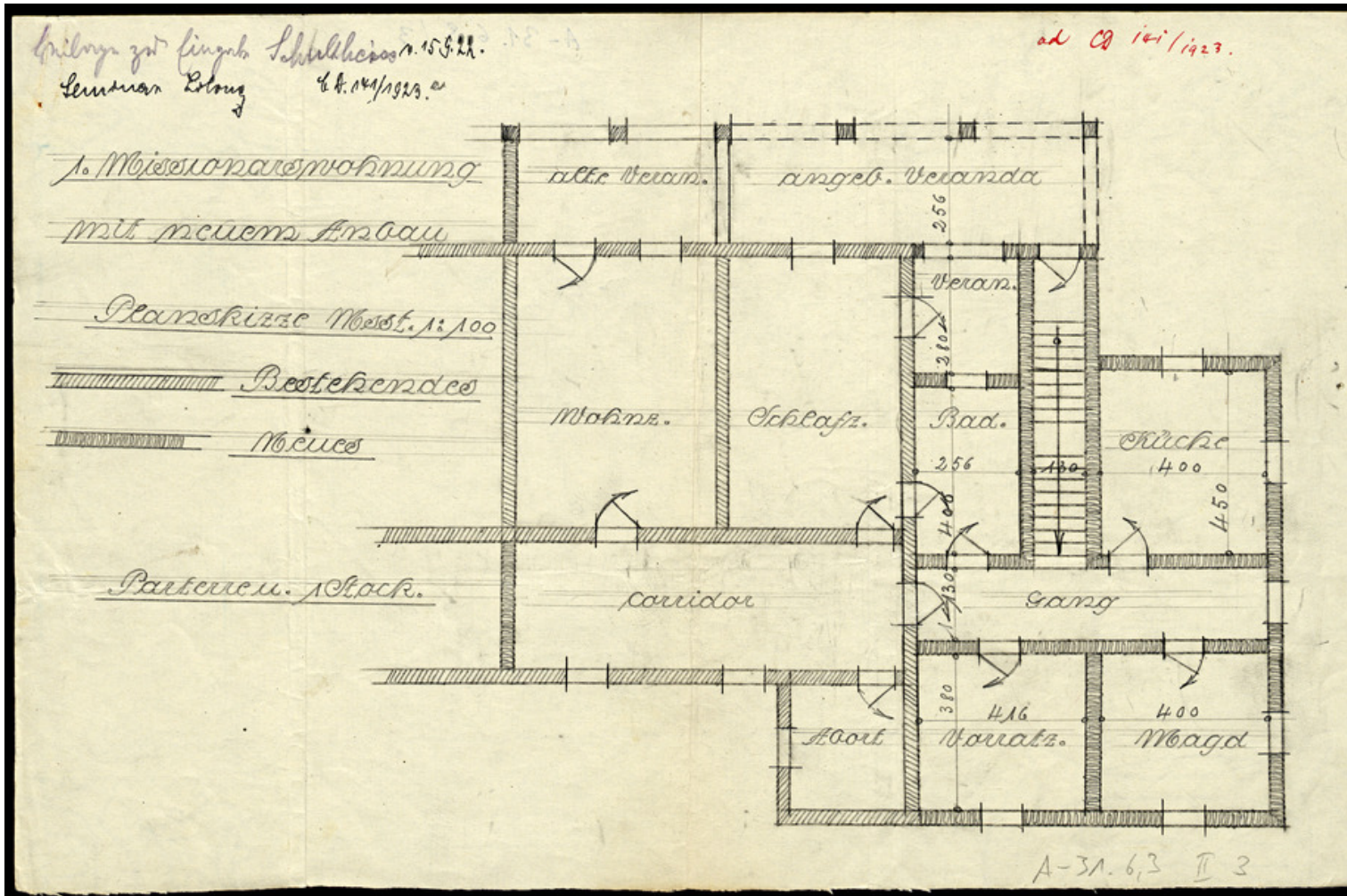


# Basel Mission Archives

## "1. Missionarswohnung mit neuem Anbau. "



**Title:** "1. Missionarswohnung mit neuem Anbau. "

**Alternate title:** 1. Missionary's apartment with new extension.

**Ref. number:** A-031.06,03#II 03

**Date:** Date late: 1926  
Proper date: 1862 - 1926

**Subject:** [Individuals]: Schultheiss, H.  
[Geography]: China  
[Geography]: Lilong  
[Archives catalogue]: Maps and plans: A - China: A-031 - Maps and sketches, plans of buildings China: A-031.06: A-031.06,03

**Type:** Map

**Format:** [Format]: 22cm x 34cm  
[Scale]: 100  
[Condition]: /

# Basel Mission Archives

---

[Detail]: Haus  
[Material]: Papier  
[Relevance]: +  
[Scale unit]: ohne Angabe

**Ordering:** Please contact us by email [info@bmarchives.org](mailto:info@bmarchives.org)

**Contact details:** Basel Mission Archives/ mission 21, Missionstrasse 21, 4003 Basel, tel. (+41 61 260 2232), fax: (+41 61 260 2268), [info@bmarchives.org](mailto:info@bmarchives.org)

**Rights:** All the images (photographic and non- photographic) made available in this collection are the property of the Basel Mission / mission 21. The Basel Mission claims copyright on the images in their possession and requires those - both individuals and organisations - publishing any of the images, to pay a users fee.