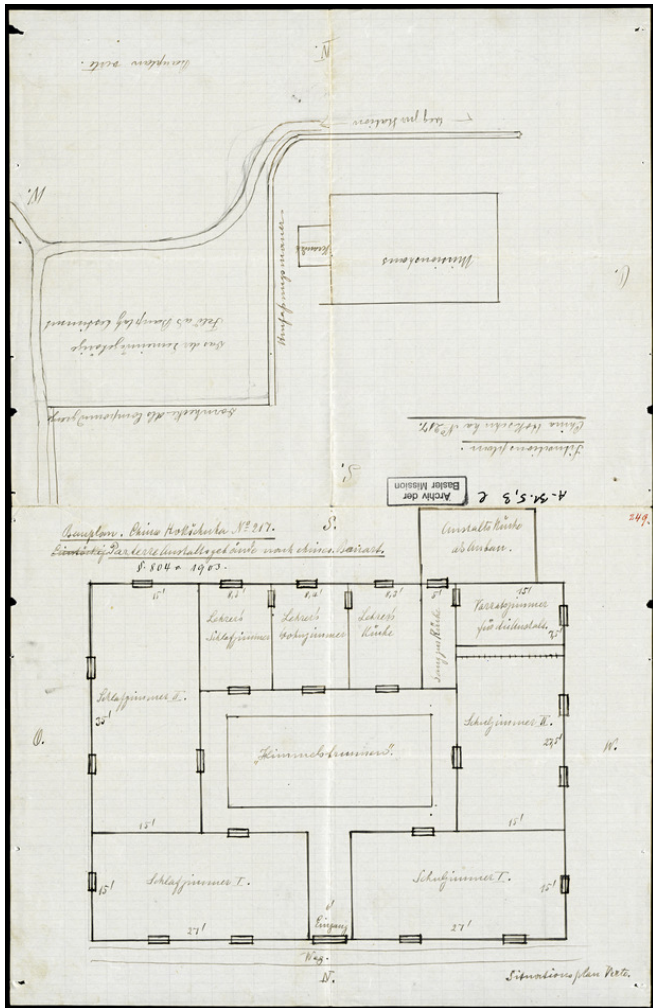


Basel Mission Archives

"(1) Bauplan. China Hokschuha No. 217. Parterre Anstaltsgebäude nach chin. Bauart. (2) Situationsplan: China Hokschuha No. 217. "



Title: "(1) Bauplan. China Hokschuha No. 217. Parterre Anstaltsgebäude nach chin. Bauart. (2) Situationsplan: China Hokschuha No. 217. "

Alternate title: (1) Building plan. China Hokschuha no. 217. Ground floor boarding school building, Chinese type of construction. (2) General plan: China Hokschuha Nor. 217.

Ref. number: A-031.05,03#1

Date: Proper date: 1903

Subject: [Individuals]: Schulze, O.
 [Geography]: China
 [Geography]: Hokschuha
 [Archives catalogue]: Maps and plans: A - China: A-031 - Maps and sketches, plans of buildings China: A-031.05 - China. Mission station plans. Fophin to Kutschuk.: A-031.05,03 - Hokschuha

Type: Map

Basel Mission Archives

- Format:** [Format]: 43cm x 28cm
[Condition]: /
[Detail]: Haus
[Detail]: Station
[Relevance]: -
- Ordering:** Please contact us by email info@bmarchives.org
- Contact details:** Basel Mission Archives/ mission 21, Missionstrasse 21, 4003 Basel, tel. (+41 61 260 2232), fax: (+41 61 260 2268), info@bmarchives.org
- Rights:** All the images (photographic and non- photographic) made available in this collection are the property of the Basel Mission / mission 21. The Basel Mission claims copyright on the images in their possession and requires those - both individuals and organisations - publishing any of the images, to pay a users fee.